

# Project Overview

## Central to Western Mass Energy Improvement Project

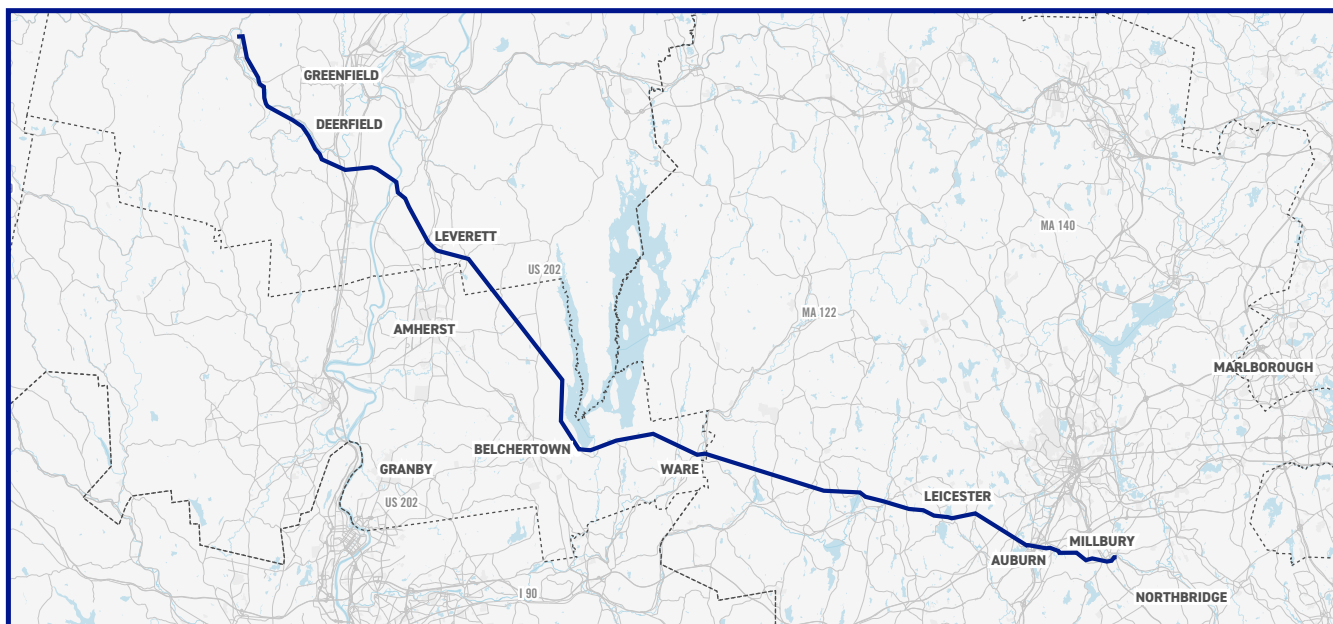
April 2026

The Central to Western Mass Energy Improvement Project (the Project) proposes to rebuild National Grid's existing E5/F6 electric transmission mainline and three associated tap lines in Central and Western Massachusetts. The Project would be located entirely within National Grid's existing right-of-way (ROW) and would extend approximately 67 miles through the towns of Shelburne, Conway, Deerfield, Sunderland, Leverett, Shutesbury, Pelham, Belchertown, Ware, West Brookfield, North Brookfield, East Brookfield, Spencer, Leicester, Auburn, and Millbury, Massachusetts.

The Project includes replacing existing steel double-circuit lattice transmission structures and 69-kilovolt (kV) transmission lines with new double-circuit steel monopole structures and transmission lines designed to meet 115-kV standards. The existing transmission structures and transmission lines currently operate at 69 kV, and the new structures and lines would continue to operate at 69 kV following completion of construction, unless and until future system needs require operation at 115 kV.

The Project also includes the installation of Optical Ground Wire (OPGW), which contains optical fiber used for system communications and provides additional protection against lightning strikes and other electrical disturbances. These upgrades would help support future electric transmission needs and enhance the long-term reliability of the electric system within the Project area.

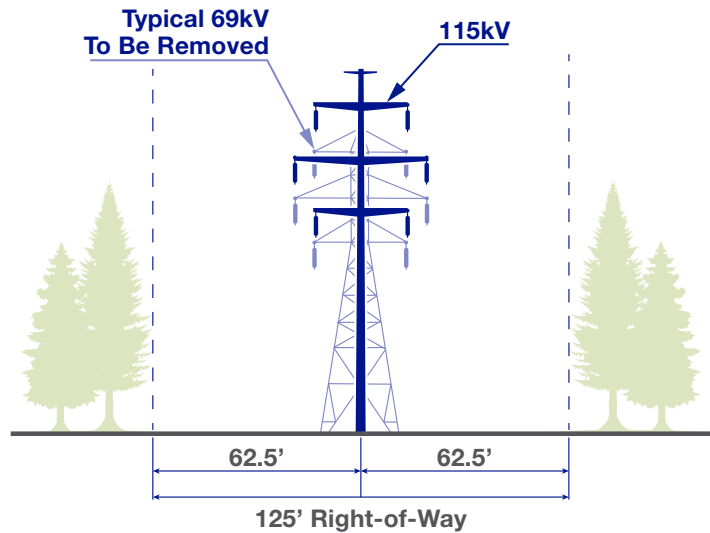
### Project Map



## Project Structures

Proposed structure heights will vary. In some cases, new structures may be approximately five to twenty five feet taller than existing structures.

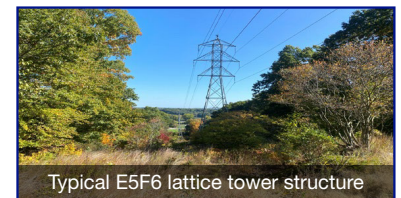
In some areas, vegetation management efforts, such as mowing, trimming and tree removal may be necessary to maintain clearance and safety requirements.



## Project Status

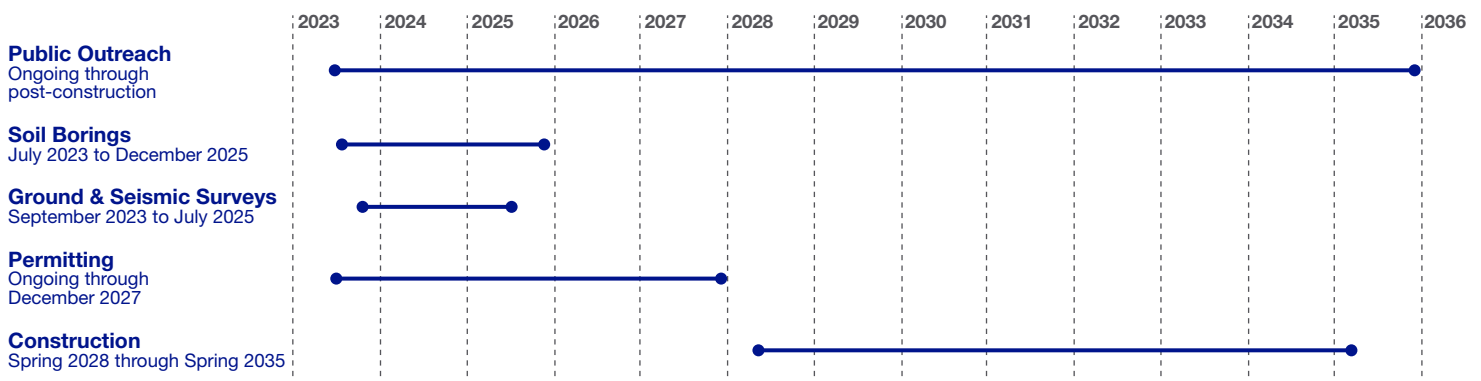
Soil boring activities, including removal of temporary timber mats, were completed in 2025. On January 13 and 14, 2026 the MA Energy Facilities Siting Board (EFSB) held three hybrid public comment hearings in Leicester, Deerfield and Belchertown, MA, offering both in-person and remote participation options, to provide the public with an opportunity to learn more about the Project.

During the hearings, National Grid presented an overview of the proposed Project where public officials and members of the public had an opportunity to ask questions and provide comments. Recordings of all public comment hearings are available on the Siting Board's YouTube channel: [https://www.youtube.com/@EFSBhearings\\_MA](https://www.youtube.com/@EFSBhearings_MA). The EFSB review process for the Project is ongoing, and no final decision has been issued at this time.



## Project Schedule

The Project is still in the permitting and design phases. Currently, construction is anticipated to begin in 2028 and is expected to take several years to complete. **This timeline is subject to change.**



## Stay Informed

National Grid is committed to keeping residents, businesses, local officials, and community groups informed and engaged as the Project progresses. To learn more about Project scope, timeline, and ongoing activities, please visit the Project website at <https://CMAtoWMAenergy.com>. You may also contact our project outreach team at **1-888-431-3536**, [info@CMAtoWMAenergy.com](mailto:info@CMAtoWMAenergy.com) or submit a question through [CMAtoWMAenergy.com](https://CMAtoWMAenergy.com)

